

# LCN-GVS

## Global Visualization System

### Description:

LCN-GVS is a central server for visualisation which can control and administrate nearly any facilities and buildings equipped with the LCN system world-wide.

Besides the standard functions, the LCN-GVS also covers measurement data acquisition, automatic timers, central access control with persons registration, alarm technology and incident reports (incl. associated logical operations, also with time & date) as well as reporting via SMS, E-Mail, etc.

The LCN-GVS is a browser based system so the user can have access to the building via any online PC, smart phone etc. Single user access rights to rooms, buildings or groups of these can be allocated via a comprehensive user account control system. Communications between the LCN-GVS visualisation server and the real estate distributed all over the world take place via a coded connection.

Due to a new licence system the LCN-GVS comes with the complete range of visualization functions and is very reasonable especially for small buildings. For large buildings the system can be upgraded via licence keys.

Configuration of the GVS-tableau/control panels, access, etc as well as backup services takes place via browser. The GVS enables a wide range of visual design options for the user interfaces. Freely selectable symbols can be individually combined with the text and a large collection of animated graphics can furnish the tableaus with particularly vivid designs.

The LCN-GVS visualisation system is browser independent and can be used with modern mobile devices such as mobile phones and smartphones.

The LCN-GVS allows for a great number of visualisations being run concurrently and has already succeeded in implementing 250 simultaneous sessions.

### Field of application:

- Visualisation, monitoring and operation of large real estate properties world-wide.
- Visualisation of smaller real estate.
- Control and monitoring of energy efficiency in buildings and real estate using data recording devices.
- Entry restriction control and person identification for every building with central/decentral authorisation administration system.
- Automatic monitoring of incidents according to any chosen criteria. The incident report device not only triggers an alarm signal but can also take action independently.
- Numerous other applications.



### Technical Data:

#### LCN-GVS PC

Operating server:

- Windows XP Professionell\*
- Windows 2003 Server\*
- Windows 2008 Server\*
- Windows Home Server\*
- Windows VISTA Business
- Windows VISTA Ultimate\*
- Windows 7 Professional
- Windows 7 Ultimate\*
- Windows 7 Embedded\*\*

Hardware:

- min. 1 GHz Pentium IV
- min. 1 GB RAM
- free USB-Port
- 2 GB HD

\*with all current updates!

\*\*Please contact us! +49 50 66 / 99 88 44!

#### Client:

The LCN-GVS is not depending on any specific browser and therefore performable on mobile devices like mobile-phones or modern smartphones. A web-browser compatible with Microsoft Internet Explorer 6 is needed.

#### LCN-module-firmware conditions:

The LCN-GVS reaches to status reports of older LCN-modules as follows:

Firmware Modul	queryable information
060101 (Jan. 1996)	Relay- / Binary sensors- / Sums- / Output status
090218 (Feb. 1998)	like 060101, incl.: Actual values
100A06 (Oct. 2006)	like 0A0A0B, incl.: Setpoints

Control commands are processed starting with firmware 060101 (Jan. 1996).

# LCN-GVS

## Global Visualisation System

### Licencing structure LCN-GVS

LCN-GVS is a global visualisation software package for the administration and operation of any number of LCN installations world-wide

With the right licence code the following LCN-GVS functions can be extended:

- automatic timers/time switches with unlimited number of channels
- incident and disturbance reporting device for print, mail, SMS etc.
- entry restriction for building users
- MODBUS-coupler
- OPC-coupler

#### The basic version LCN-GVS includes:

- 1 Licence module = 10 modules
- 1 Licence building users = 5 users
- 1 Licence time switching channels = 10 channels
- 1 Licence incident reporting device= 10 incident reporting devices
- 1 Licence tableaus = 10 tableaus

Licence package for GVS:

#### LCN-GVSM

Modules in increments of 10 (max. 2500 per code)

#### LCN – GVSU

Building users in increments of 5 (max. 1250)

#### LCN – GVSZ

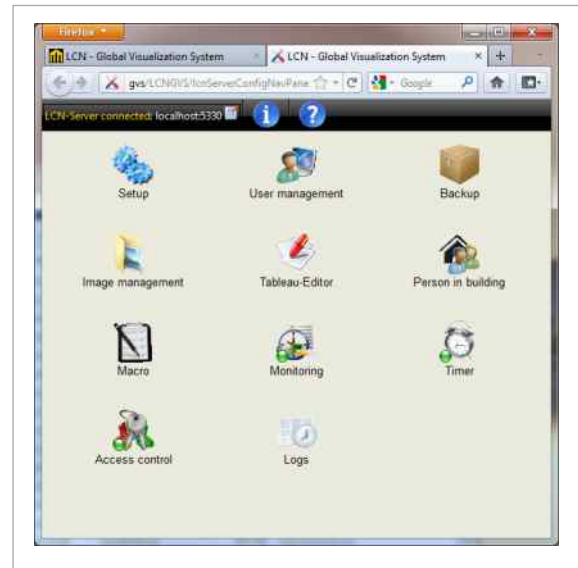
Switching channels in increments of 10 (max. 2500)

#### LCN – GVSE

Incident reporting devices in increments of 10 (max. 2500)

#### LCN – GVST

Tableaus in increments of 10 (max. 2550)



#### Note:

Licence codes can be purchased additionally at any time; for example: to increase the amount of incident reporting devices. Every new licence supplements the existing one/s. For more detailed information please refer to the installation instructions.

